

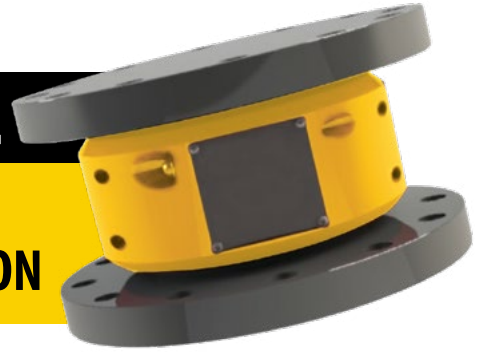
TORQUE SPOOL

DIGGA
CONSTRUCTION GRADE
MACHINERY ATTACHMENTS

NEW

MEASURE

- ✓ TORQUE
- ✓ INCLINATION



ACCURATE & EASY TO USE

- 99%+ Accurate Torque Measurement
- In-cab touch 7in screen display

EXPORT DATA LOGGING RECORDS

- Torque, pile depth, angle, date, time & more
- Additional user-defined export fields

SIMPLE INSTALLATION

- Mounts between the output shaft and drive tool*
- To suit MD to XD Anchor Drives (80,000 FT-LBS to 360,000 FT-LBS)
- Superior design & engineered for tough conditions

WiFi IN-CAB DISPLAY

- For better and more stable data transfer

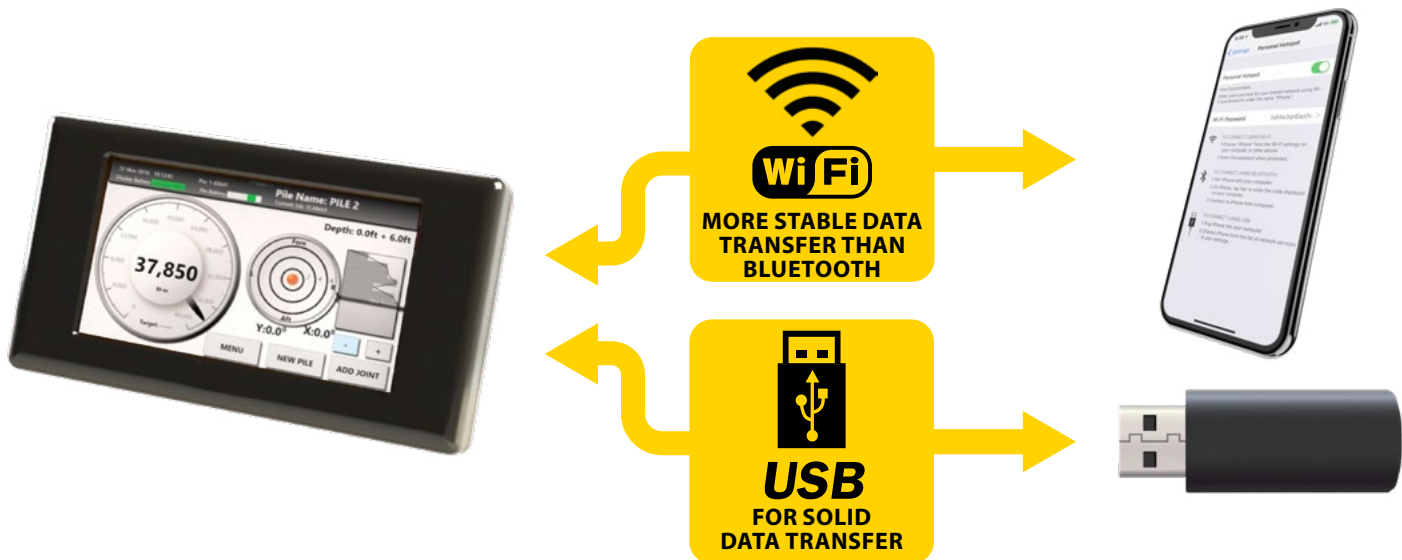


**Drive tools sold separately*

NEW REPORTING CAPABILITIES

DIGGA IS PLEASED TO INTRODUCE A NEW WAY OF REPORTING AND EXPORTING DATA

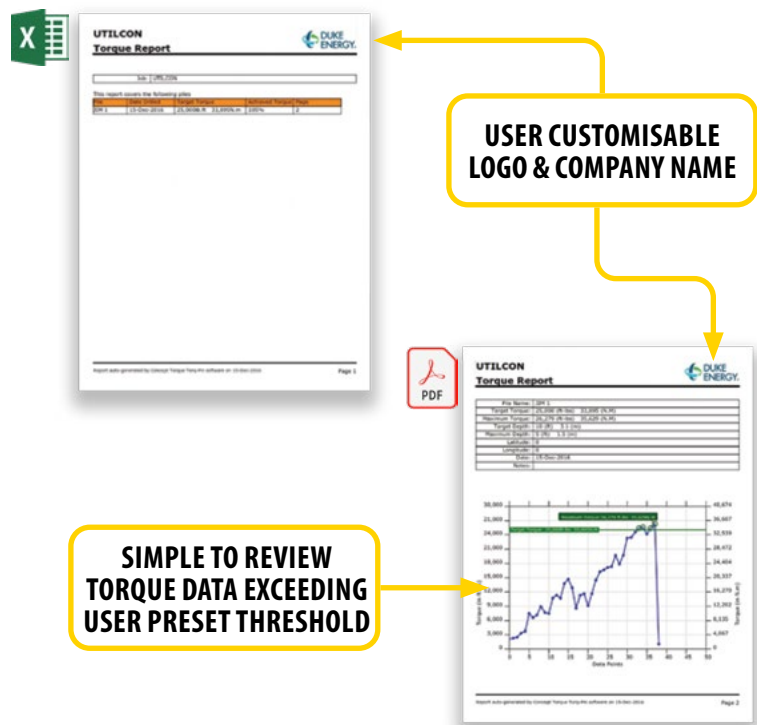
- ▶ Reports are exportable directly from the display, either via email using a smartphone with its' hotspot enabled or through the onboard USB port connected to a flash drive.



- ▶ Reports are exported as both bare data (.dat file – open Excel), and as a PDF line chart as shown below. One cover page for the job and a page for each individual pile is generated.

- ▶ Additionally, the PDF line chart will show depth as it is entered during the job. This will give the engineer a view of depth vs. torque on each pile.

An optional handheld trigger is available which allows the operator (or his helper) to depress it when the pile/ anchor reaches a marked depth, allowing a more accurate (and more continuous) representation of torque vs time.





Wireless signal is 2.4 GHz FHSS RF. Outdoor range – up to 2.5 miles. Frequency Hopping Spread Spectrum technology allows clear communication across up to 79 frequencies

TORQUE SPOOL SPECIFICATIONS

Rated Output (R.O.)	2 mV/V nominal
Nonlinearity	0.1% of R.O.
Hysteresis	0.1% of R.O.
Nonrepeatability	0.05% of R.O.
Zero Balance	0.1% of R.O.
Compensated Temp. Range	60° to 160°F
Safe Temp. Range	-65° to 200°F
Temp. Effect on Output	0.005% of Load/°F
Temp. Effect on Zero	0.005% of R.O./°F
Terminal Resistance	350 ohms nominal
Excitation Voltage	5 VDC
Safe Overload	150% of R.O.

Circuit boards, firmware and software are all designed specific for the application. Fully potted, sealed, gasketed and cushioned to ensure maximum protection and long life.

7" Windows OS Tablet embedded in a rugged ABS casing. Designed to IP67 ingress protection.



TORQUE RATING AND SPECIFICATIONS

TORQUE RATING	DRIVES TO SUIT	"A"	"B"	"C"	"D"	"Y"	"X"	WEIGHT
150,000 ft-lb	MD/UD	8.50"	14.00"	12.00"	1.25"	1.00"	12 Holes	251 lb
250,000 ft-lb	UD/XD	9.25"	17.52"	15.551"	1.37"	1.181"	12 Holes	434 lb
375,000 ft-lb	XD	9.25"	23.75"	21.75"	1.50"	1.125"	16 Holes	812 lb

