

2 Way Flow Reversal Valve

DOES YOUR EXCAVATOR ONLY HAVE A SINGLE FLOW HAMMER CIRCUIT? NEED AN EASY AND COST EFFECTIVE WAY TO REVERSE YOUR ATTACHMENT?

DIGGA OFFERS TWO COST EFFECTIVE SOLUTIONS - INTEGRATED AND MACHINE MOUNTED

Flow Reversal Valves, for easy two way (Bi-Directional) use of your auger drive or other attachments. Utilizing the single way flow from your hammer circuit, forward and reverse control is obtained via an electrical signal either 12 or 24 volt (different models).

The Digga Flow reversal system has been rated to ensure a low pressure drop for the specific valve and drive unit (meaning more power to your drive head). Electrical wiring kits (purchased separately) utilize high quality weather-proof Deutsch connectors for maximum performance and safety on the job site.

IDEAL USE

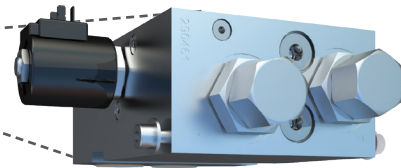
For operators with excavators fitted with only a hammer circuit, that want a cost effective solution for bi-directional flow for their attachments.

INTEGRATED VALVE

AVAILABLE IN 12 VOLT AND 24 VOLT MODELS



THE VALVE IS MOUNTED ON TOP OF THE MOTOR OF THE DRIVE UNIT.



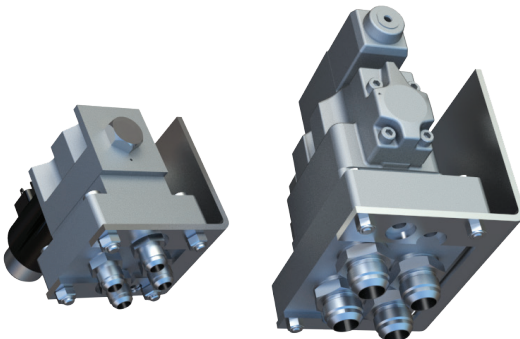
INTEGRATED VALVE FEATURES

- Bolted directly to Digga top port hydraulic motor.
- Fits neatly inside bail providing added protected from external sources.
- Integrated design eliminates the need to mount the valve on the excavator boom or hitch.
- Valves come with mounting bracket and fittings.
- Electrics purchased separately 12 or 24V.

SUITABLE FOR

- Digga Auger & Anchor Drives fitted with Digga top port hydraulic motors.
- Available on high flow Digga Drives 5DDS to 30DDS.

MACHINE MOUNTED VALVE



Mounted in the operators preferred position directly to the host machine. Externally mounted 2 Way Valves takes the one way flow from your hammer circuit and then utilizing an electrical switch (runs back to the cab) allow for easy forward and reverse control of the drive unit.

EXTERNAL VALVE FEATURES

- 2 Models - For excavators with up to 30gpm and up to 80gpm.
- Valves come with mounting bracket and fittings, hoses not included.
- Electrics purchased separately 12 or 24V.

SUITABLE FOR

- Any auger drive not fitted with Digga top port hydraulic motors.
- Available for use with any attachment requiring two way flow.